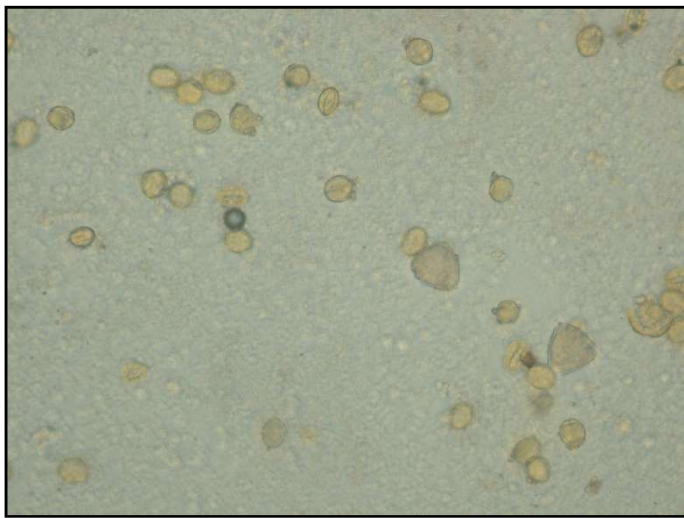


## DOSSIER FOTOGRAFICO ANALISI MELISSOPALINOLOGICA



Sedimento di miele monoflora di castagno

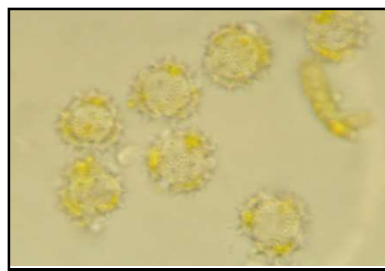


Sedimento di miele monoflora di acacia

### Alcuni pollini riscontrabili nei mieli italiani

Asteraceae

Ericaceae



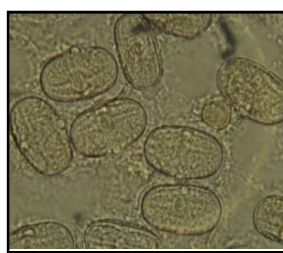
Boraginaceae

Rosaceae



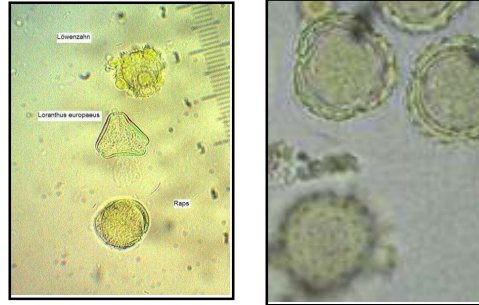
Leguminose

Eucalyptus



## Alcuni pollini riscontrabili nei mieli dell'Est Europa

Loranthus, Asteraceae,  
Brassicaceae, Ambrosia



## Alcuni pollini riscontrabili nei mieli cinesi

Astragalus, Fagopyrum

