





Quality Focused Apisector Development in Ethiopia



**Presentation at the
6th Apimedica & 5th Apiquality
International Symposium**

Rome, Italy ; 22 - 25 November 2016

Negash Bkena

General Manager, Ethiopian Apiculture Board



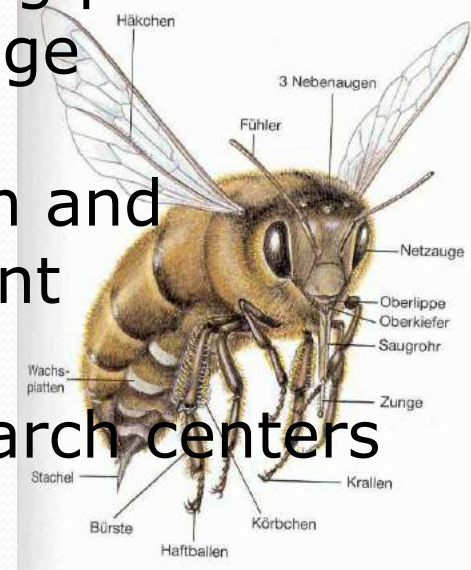
Ethiopia

- ❑ Ancient East African country
- ❑ Total area of approximately **1.1** million sq km
- ❑ Estimated population of 100,000,000
- ❑ High proportion of labor force
- ❑ Diverse agro-ecology



Ethiopia is an 'Api – Country'

- Over 10 million honeybee colonies
- Over 1.8 million apiculturalists
- Over 7,000 species of flowering plants many could serve for bee forage
- Policies in favour of bee health and beekeeping sector development
- Growing number for bee research centers







Ethiopia is 'Honey Country'



- Beekeeping practiced - thousands of years
- Honey production - potential - 550,000 MT
- - Actual - 54,000 MT
- Wax production - potential - 50,000 MT
- - Actual - 5,000 MT
- So that, Ethiopia is one of the world's **leading wax and honey producers**
- Natural honey, organically certified
- National famous drink – honey wine (Tej)

Honey Win - 'Tej'





Bottlenecks



- Traditional management system
- Very low productivity & limited supply
- Quality issues, including adulteration
- Finance – lack of access for credit
- Constrained input supply chain & quality issues
- Smallholder level production
- Low awareness on role & potential

TRADITIONAL SYSTEMS













www.ETHIOPEA

Develop't Efforts Underway



- ❖ Creating favourable policy ground
- ❖ Research centers & activities expansion
- ❖ Regional, National & Continental MSPs for dialogues and sector advocacy
- ❖ Sector associations for support (EAB, ESAS, EHBPEA)
- ❖ Sector promotion & marketing for positive actions
- ❖ Api-Directory of Ethiopia to facilitate linkages
- ❖ Api-News for information and knowledge sharing
- ❖ Organization of Api-expos and Conferences



wiseGEEK

Develop't Efforts Ctnd



- ❖ ASPIRE project in 4 potential regions
- The project tries to address:
 - knowledge & skill gap of 30,000 smallholder bkrs
 - Business development service provision problems
 - Credit finance shortage/gap in financial institutions
 - Gaps in business linkage (producer – processor)
 - Quality issues – for inputs & hive products
 - Input production & supply chain problems
 - Gaps in international market linkages

Training on Modern Beekeeping















D181

Kindu

Modern & Appropriate Technology Equipments Manufacturing Center

Robustness from India

High capacity

Best Protective clothes

Heavy press cheese press

Decaying Tanks

Thank you for buying

SNV

UNICEF

Beekeeping-Kentri

Exhibitor Name	Product	Contact
Chaka Agriculture	Jinja	Gerts
Tukio Agriculture	Jinja	Gerts
Wito Agriculture	Jinja	Gertens
Shilo, Ono, Baki Agriculture	Jinja	Gertens
Wito One (Large) Agriculture	Jinja	Gertens
Wagiri (Small) Agriculture	Jinja	Gertens
Karuri Coffee Farming	Jinja	Mwai
Nari Coffee Farming	Jinja	Mwai
Soko Coffee Farming	Jinja	Mwai
Wito Agriculture	Jinja	Mwai
Lila Agriculture	Jinja	Mwai







Bee Keeping In Ilu Aba bora



Yaya wu Gense
Faci



Improved Beehives hander shed in
Hurme District



Black Honey From Strychnos
guineense (Gaddessa)



Innovative Farmer At Bacha
(Ato Mohammed Fich)



Traditional beehives on the Abba
bora river (Baka Arba)

Some of the Dore
Honey in Ilu Aba



Black Honey from strychnos
guineense (Gatama)



The Oromia Regional State

Ilu Abba Bora-Organic Honey land!

* Number of district/Woredas.....	24
• Rural.....	22
• Urban.....	2
* Human Population.....	1,535,482
• Rural.....	1,365,952(88.6%)
• Urban.....	169,530(11.45%)
* Total land size in hek.....	1,633,157
• Land to be utilized for agriculture.....	600,373
• Irrigation coverage.....	500,300 hek

• Altitude.....	500-2575 a.s.l.
• Temperature.....	18 CO - 24CO
• Humidity.....	10%
• High land.....	67%
• Low land.....	23%
• Population.....	1,317,247

• Cattle.....	773,320
• Sheep.....	183,151
• Goats.....	747,405
• Livestock.....	900,000-1million
• Production activities.....	1,306,477
• Traditional beehives.....	44,760
• Modern beehives.....	12,795

• Potential of the zone.....	25,000 MT
• Actual production.....	14,000



OROMIA



Oromia Region
East Wallaga Zone
Gore Galla District
Bakkege - Oromia

Land of biodiversity



Oromia Region
East Wallaga Zone
Gore Galla District
Bakkege - Oromia
Bakkege - Oromia

Oromia Region
East Wallaga Zone
Gore Galla District
Bakkege - Oromia
Bakkege - Oromia



Develop't Efforts Cntd

- ❖ Fostership program – graduate girls
 - The program tends to work with universities
 - Intended to inject professionalism
 - Hopped help to create models for rural women
 - Also could help to enhance employment generation
 - Result of collaboration b/n GIZ, GBA & BKR_s4BKR_s
- ❖ Studies on characterization of honeys from diff't sources
- ❖
- ❖ Strengthening government extension service
- ❖ Increased private sector engagement - incentives
- ❖ Technical assistance for dev't partners' interventions



GT/SETH
GDC/ETHA







Efforts for Quality Improvement

- ➡ Policies and guidelines in place – Proc nr -660/2009
- Guideline **372/2016**
- ➡ Harmonized national honey & beeswax standards
- ➡ Institutional development for quality control –
 - ✓ ESA, FMHACA, CAE (lab),
- ➡ **GMP** in place – HCCP, ISO ... etc
- ➡ Annual **RMP** for EU mandated office
- ➡ Organic certification
- ➡ Fair Trade
- ➡ Training of Producers – harvesting & post harvest mgt



Efforts for Quality Ctnd

- ➡ Api-Ethiopia expo for experience sharing
- ➡ Task Forces - to deal with quality issues
- ➡ ASPIRE laboratory development for accreditation
- ➡ GIZ NQI project – proficiency testing
- ➡ AU-IBAR bee health satellite lab for Eastern Africa
- ➡ Quality manuals for producers – local language
- ➡ Sample GMP manual for reference purpose
- ➡ Exposure visits (learning visits)
- ➡ New proclamation & guideline on marketing process in progress









wiseGEEK

Achievements



- Awareness on the sector potential & role improved
- EU Third Country Listing maintained
- First ever export to UK (EU) in 2008
- Demanding countries increased – Europe, Asia ..
- Export increased from 30 - 900 MT
- Quality improvement in progress
- Sector issues and opportunities discussed by the MSPs, directives for solutions devised



Achievements



- Capacity of sector actors improving
- Improvement in apiary management
- Quality concept improving
- Private sector engagement increased
- Increased women and youth engagement
- Capacity of laboratories improving
- Concern & engagement of govern't & development partners improved

'Chefeka' – transitional beehives

















wiseGEEK

Issues



- Productivity
- Credit service
- Quality issues
- Producer's bottom - top structure
 - Scattered production
 - infrastructure
 - Mindset



However:



- **Excellent policy and investment support**
 - **Many private actors**
 - **Great interest in the sector**
 - **Engagement of women & youth**
- **A lot of room for intervention (only 10%)**
- **Hence, very optimistic of rapid changes**
 - **A bright future!**





Join Us as:

**Researcher, Develop't or Mar
Actor**

- **Thank you for your attention.**
- **Questions are welcome.**

- **nbtb1963@yahoo.com**
- **ethioapic2012@gmail.com**
- **www.ethioapiboard.org**
- **00251 (0)911 879963 (mob)**